

EVIO Labs Medford (pka Kenevir Research)  
540 East Vilas Road, Suite F, Central Point, OR 97502  
541-668-7444 / OLCC 010-1001626980D / www.EVIO Labs.com

**Kush**  
Farm# 10



Confident Cannabis ID: 2009KR0153.4999

Sample ID: M201504-01

Matrix: Hemp

METRC Batch #:

Sampling Method/SOP: Client

Date Sampled: NA

Date Accepted: 09/24/20

Harvest/Process Lot ID:

Batch ID:

Batch Size (g):

Unit for Sale:

Harvest/Production Date:

## Cannabinoid Analysis

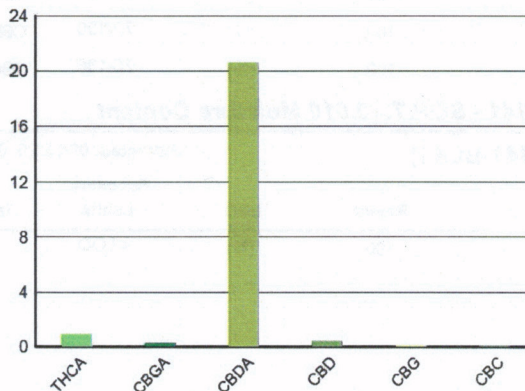
**FOR INFORMATIONAL USE ONLY - NOT FOR REGULATORY PURPOSES**

Date/Time Extracted: 09/25/20 09:03

Analysis Method/SOP: SOP.T.40.020

Date/Time Analyzed: 09/26/20 01:02

Cannabinoids	LOQ(%)	mg/g	% weight	Cannabinoid Profile
<b>Total THC</b> ((THCA*0.877)+Δ9THC)		<b>7.95</b>	<b>0.795</b>	
<b>Total CBD</b> ((CBDA*0.877)+CBD)		<b>184.53</b>	<b>18.453</b>	
THCA	0.0400	9.06	0.906	
delta 9-THC	0.0400	< LOQ	< LOQ	
delta 8-THC	0.0400	< LOQ	< LOQ	
THCV	0.0400	< LOQ	< LOQ	
CBGA	0.0400	2.13	0.213	
CBDA	0.0400	206.00	20.6	
CBD	0.0400	3.87	0.387	
CBDV	0.0400	< LOQ	< LOQ	
CBN	0.0400	< LOQ	< LOQ	
CBG	0.0400	0.62	0.0620	
CBC	0.0400	0.41	0.0409	
THCV-A	0.0400	< LOQ	< LOQ	
CBDV-A	0.0400	0.58	0.0577	
CBCA	0.0400	23.60	2.36	
Sum of tested Cannabinoids	0.0400	246.00	24.6	



## Moisture Content

Date/Time Analyzed: 09/25/20 00:00  
Analysis Method/SOP: SOP.T.40.010

**Moisture: 13.5 %**

"Total THC" and "Total CBD" are calculated values and are an Oregon reporting requirement (OAR 333-064-0100). For Cannabinoid analysis, only delta 9-THC, THCA, CBD, CBDA are ORELAP accredited analytes. Cannabinoid values reported for plant matter are dry weight corrected; Oregon Water Activity action level is 0.65Aw and Oregon Moisture Content action level is 15%. Samples above limit will be highlighted RED; FD = Field Duplicate; LOQ = Limit of Quantitation.

Stephanie Moon  
Laboratory Director - 9/28/2020

Page 1 of 2



EVIO Labs Medford (pka Kenevir Research)  
540 East Vilas Road, Suite F, Central Point, OR 97502  
541-668-7444 / OLCC 010-1001626980D / www.EVIO Labs.com

## Quality Control

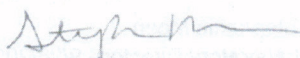
**Batch: M20I138 - SOP.T.30.050 Prep for Cannabinoids**

Blank(M20I138-BLK1)				Extracted: 09/25/20 09:03		Analyzed: 09/25/20 23:24	
Analyte	Result	LOQ	Recovery Limits	Analyte	Result	LOQ	Recovery Limits
THCA	< LOQ	0.0400 (%)	< LOQ	delta 9-THC	< LOQ	0.0400 (%)	< LOQ
delta 8-THC	< LOQ	0.0400 (%)	< LOQ	THCV-A	< LOQ	0.0400 (%)	< LOQ
THCV	< LOQ	0.0400 (%)	< LOQ	CBDA	< LOQ	0.0400 (%)	< LOQ
CBD	< LOQ	0.0400 (%)	< LOQ	CBDV-A	< LOQ	0.0400 (%)	< LOQ
CBDV	< LOQ	0.0400 (%)	< LOQ	CBG	< LOQ	0.0400 (%)	< LOQ
CBGA	< LOQ	0.0400 (%)	< LOQ	CBN	< LOQ	0.0400 (%)	< LOQ
CBCA	< LOQ	0.0400 (%)	< LOQ	CBC	< LOQ	0.0400 (%)	< LOQ
Sum of tested Cannabinoids	< LOQ	0.0400 (%)	< LOQ				

LCS(M20I138-BS1)				Extracted: 09/25/20 09:03		Analyzed: 09/25/20 23:40	
Analyte	% Recovery	LOQ	Recovery Limits	Analyte	% Recovery	LOQ	Recovery Limits
THCA	103	(%)	70-130	delta 9-THC	104	(%)	70-130
THCV	106	(%)	70-130	CBDA	104	(%)	70-130
CBD	103	(%)	70-130	CBG	102	(%)	70-130
CBGA	103	(%)	70-130	CBN	110	(%)	70-130
CBCA	100	(%)	70-130	CBC	96.6	(%)	70-130

**Batch: M20I141 - SOP.T.40.010 Moisture Content**

Blank(M20I141-BLK1)				Extracted: 09/25/20 00:00		Analyzed: 09/25/20 00:00	
Analyte	Result	LOQ	Recovery Limits	Analyte	Result	LOQ	Recovery Limits
Percent Moisture	100	(%)	< LOQ				



Stephanie Moon  
Laboratory Director - 9/28/2020

Page 2 of 2